



Investor Presentation

Bell Potter Healthcare
Conference 2023



ASX: IIQ | 16 November 2023



This presentation has been prepared by INOVIQ Limited (“INOVIQ” or the “Company”) based on information available to it as at the date of this presentation. This presentation contains general and background information about the Company’s activities current as at the date of the presentation and should not be considered to be comprehensive or to comprise all the information that an investor should consider when making an investment decision and does not contain all information about the Company’s assets and liabilities, financial position and performance, profits and losses, prospects, and the rights and liabilities attaching to the Company’s securities necessary to make an investment decision. The information in this presentation should be read in conjunction with the Company’s other periodic and continuous disclosure announcements lodged with the Australian Securities Exchange (ASX), available at www.asx.com.au. The information in this presentation is based on the Company’s own information and estimates and has not been independently verified. The Company is not responsible for providing updated information and assumes no responsibility to do so. Any investment in the Company should be considered speculative and there is no guarantee that they will make a return on capital invested, that dividends would be paid, or that there will be an increase in the value of the investment in the future.

This Presentation may contain certain “forward-looking statements” that are based on management’s beliefs, assumptions and expectations and on information currently available to management. The words “expect”, “anticipate”, “estimate”, “intend”, “believe”, “guidance”, “should”, “could”, “may”, “will”, “predict”, “plan” and other similar expressions are intended to identify forward-looking statements. Any indications of, and guidance on, future operating performance, earnings, financial position and performance are also forward-looking statements. Forward-looking statements, opinions and estimates provided in this Presentation are based on assumptions and contingencies which are subject to change without notice, as are statements about market and industry trends, which are based on interpretations of current market conditions.

Actual results, performance or achievements could be significantly different from those expressed in, or implied by, these forward-looking statements. No representation, warranty or assurance (express or implied) is given or made in relation to any forward-looking statement by any person (including INOVIQ or any of its advisers). In particular, no representation, warranty or assurance (express or implied) is given that the occurrence of the events expressed or implied in any forward-looking statements in this Presentation will actually occur. Actual operations, results, performance, targets or achievement may vary materially from any projections and forward-looking statements and the assumptions on which those statements are based.

Nothing contained in this Presentation constitutes investment, legal, tax or other advice. This Presentation does not purport to be all inclusive or to contain all information which its recipients may require in order to make an informed assessment of the Company’s prospects.

You should note that any past performance is given for illustrative purposes only and should not be relied on as (and is not) an indication of the Company’s views on its future financial performance or condition. Past performance, including past share price performance, of INOVIQ cannot be relied on as an indicator of (and provides no guidance as to) future performance including future share price performance.

Company snapshot



Precision focus

Precision diagnostic and exosome solutions to improve patient outcomes



Disruptive technology

Proprietary technology platforms driving future products for cancer and other diseases



Deep pipeline

Multi-stage pipeline including SubB2M diagnostics, exosome research tools and exosome diagnostics



Compelling data

High accuracy exosome isolation tools and diagnostics for breast and ovarian cancers



Commercial products

Commercial exosome isolation tools and bladder cancer detection test



Partnering for growth

Partnering with KOLs and Industry to deliver clinical and commercial outcomes

Financial information (ASX:IIQ)

Ordinary shares ²	92,018,702
Listed options ²	2,611,349
52-week H/L ²	A\$0.990-0.460
Share price ²	A\$0.60
Market capitalisation ²	A\$55.2m
Cash at bank ¹	A\$6.3m

Major shareholders (as at 10 November 2023)

Merchant Funds Mgt Pty Ltd	14.2%
Moggs Creek/Lawn Views Pty Ltd	5.3%

Share price performance



1. Cash at 30 Sep 2023 (ASX: 30 Oct 2023); 2. As at 10 Nov 2023



DR GEOFF CUMMING
Non-Executive Chairman

Healthcare and biotechnology director with extensive diagnostics industry experience.

Previously Managing Director Roche Diagnostic Systems (Oceania), MD/CEO Biosceptre International Ltd and MD/CEO of Anteo Diagnostics Ltd.

Currently NED AnteoTech Ltd.



MAX JOHNSTON
Non-Executive Director

Healthcare industry director and international business leader with extensive experience across medtech, pharmaceuticals, consumer healthcare and consumer goods.

Previously President and CEO of Johnson & Johnson Pacific, Chairman of AusCann Ltd, NED of PolyNovo Ltd, Medical Developments International Ltd, Tissue Repair Ltd and CannPal Animal Therapeutics Ltd.



PHILIP POWELL
Non-Executive Director

Healthcare industry director and chartered accountant with extensive investment banking experience specialising in capital raisings, IPOs, mergers and acquisitions and other transactions across pharma, food and agriculture.

Previously at OAMPS Ltd and Arthur Andersen, and NED at Polynovo Ltd and Medical Developments International Ltd.

Currently NED RMA Global Ltd.



DR LEEARNE HINCH
Chief Executive Officer

Biotechnology CEO with a successful track record in corporate development, capital raising, product development, commercialisation and licensing.

Past leadership and consulting roles in ASX-listed biotechnology, multinational and private companies across diagnostics, devices, therapeutics and animal health including Eustralis Pharmaceuticals, HealthLinx, OBJ, Holista Colltech, Virbac and Mars.



DR GREG RICE
Chief Scientific Officer

Internationally recognized, award winning scientist with over 35 years' experience and a successful track record in oncology research, exosome science, biomarker discovery, and diagnostics development.

Previous leadership roles in academia and industry including at Uni Queensland Centre for Clinical Research, Baker Heart Institute, University of Melbourne, Monash University and HealthLinx.



MARK EDWARDS
CFO & Company Secretary

Highly experienced finance executive with expertise in financial leadership and management, corporate governance, investor relations and corporate transactions.

Previous senior roles in ASX listed pharmaceutical, medical device and healthcare companies, including Medical Developments International and Cogstate.



Focused on advancing the development and commercialisation of our SubB2M and EXO-NET platforms

- ✓ Clinically validated **SubB2M technology** and commenced BC monitoring study to enable partnering for LDT commercialisation
- ✓ Developed, validated and commissioned **high-throughput EXO-NET** exosome isolation system to enable a complete exosome concept-to-clinic diagnostics solution
- ✓ Secured **commercial partners** for EXO-NET with Promega and ResearchDx to drive future revenues
- ✓ Progressed **pipeline** of EXO-NET research tools, SubB2M tests and exosome diagnostics
- ✓ Initiated discussions for potential **co-development** of exosome diagnostics (using EXO-NET)
- ✓ Expanded Board with the appointment of experienced director, **David Williams**, as Chairman elect¹





STRATEGIC FOCUS

Leading exosome solutions and precision diagnostics company focused on improving patient outcomes for cancer

DISRUPTIVE TECHNOLOGY

EXO-NET immunoaffinity
magnetic bead-based
exosome isolation

SubB2M technology
for enhanced cancer
detection

EXO-ACE ion exchange
chromatography for therapeutic
exosome production



RESEARCH TOOLS & SERVICES

EXO-NET products
EXO-NET services



DIAGNOSTICS

SubB2M diagnostics
Exosome diagnostics
hTERT test



THERAPEUTICS

Exosome therapeutics

Products and pipeline | multi-stage research tools and cancer diagnostics



- Exosome research tools for **exosome isolation**, biomarker discovery and diagnostics development
- Blood tests for **earlier and more accurate detection** of breast, ovarian and other cancers

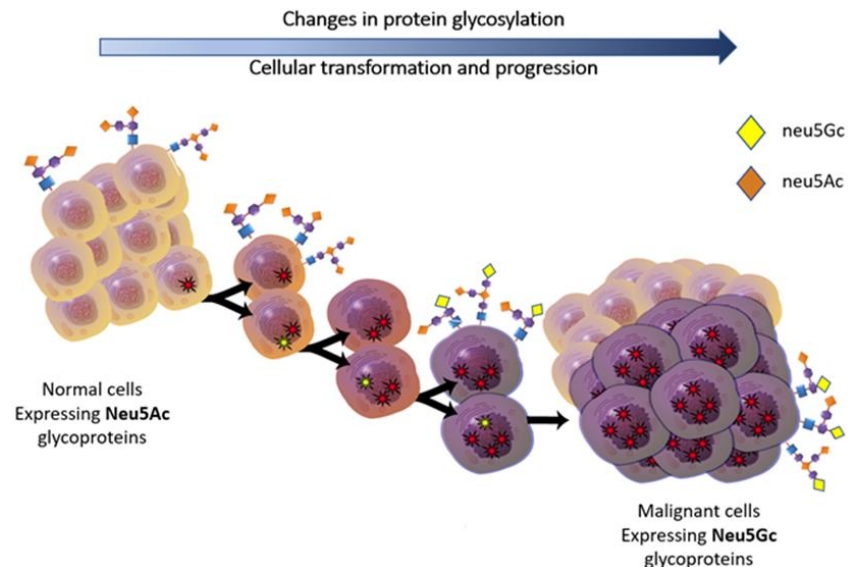
	PRODUCT	INDICATION	USE	RESEARCH	ASSAY DEVELOPMENT	CLINICAL DEVELOPMENT	MARKET
SubB2M Dx	hTERT ¹	Bladder Cancer	Adjunct to cytology	IVD-Class 1 USA			
	SubB2M-BC	Breast Cancer	Monitoring	LDT			
	SubB2M-OC	Ovarian Cancer	Monitoring	LDT			
	SubB2M-SPR	Multi-cancer	Pre-screening	LDT			
EXO tools/Dx	EXO-OC ²	Ovarian Cancer	Screening	LDT			
	EXO-NET RUO	pan-EV capture	Research tool	RUO			
	TEXO-NET RUO	tumour derived-EV capture	Research tool	RUO			
	NEURO-NET RUO	brain derived-EV capture	Research tool	RUO			

NOTE: Development pipeline is indicative only, subject to review.



Scientific rationale

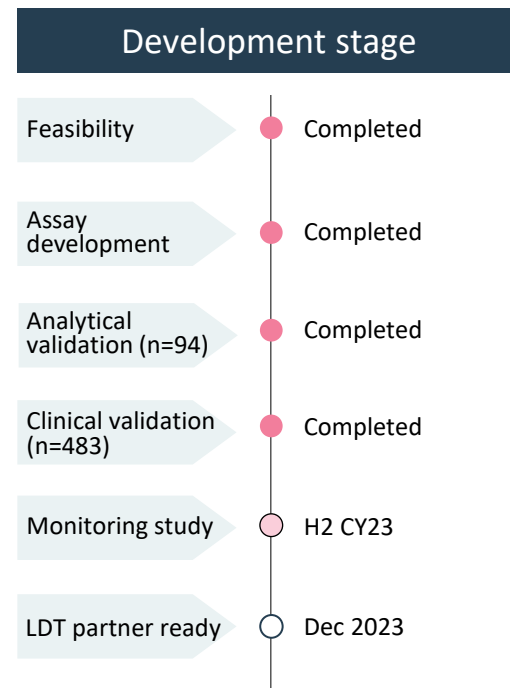
- Cancer cells have a distinct feature of adding different sugar molecules to the proteins they produce, which sets them apart from normal cells
- **Neu5Gc** is a sugar molecule commonly found in cancer cells
- **SubB2M** is an engineered protein that preferentially binds to Neu5Gc
- SubB2M is a promising **multicancer probe**
- Incorporating SubB2M into existing cancer biomarker tests, may **improve sensitivity and specificity** for detecting various types of cancer





Clinical-stage and progressing towards partner-ready by Dec 2023 to enable LDT commercialisation

Breast cancer	<ul style="list-style-type: none">• #1 cancer in women• 2.3m new cases of breast cancer worldwide pa¹• 7.8m survivors (5-year)¹
Unmet medical need	<ul style="list-style-type: none">• Earlier and more accurate detection and monitoring tests required for breast cancer• US\$4.2b global diagnostics market²
Disruptive technology	<ul style="list-style-type: none">• SubB2M is an engineered protein that specifically binds the pan-cancer biomarker Neu5Gc³• Improved immunoassay for detection of Neu5Gc decorated CA15-3• Increased sensitivity and specificity to detect cancer over existing assays
Intended use	<ul style="list-style-type: none">• Aid in monitoring breast cancer treatment response and disease recurrence in women previously diagnosed with disease
Go-to-market strategy	<ul style="list-style-type: none">• LDT then IVD (510k/PMA process)• Partner with a CLIA-accredited laboratory



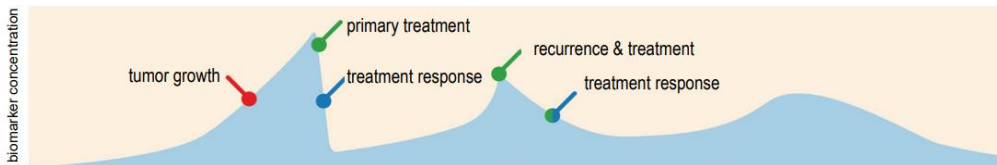


Clinical validation study | completed

- Retrospective, case-control, **clinical validation study** in 483-samples demonstrated **SubB2M/CA15-3 test detected breast cancer across all stages with high accuracy** (AUC 0.93, 81% sensitivity and 93% specificity) and **outperformed a leading approved CA15-3 test¹**

Breast Cancer monitoring study | commenced

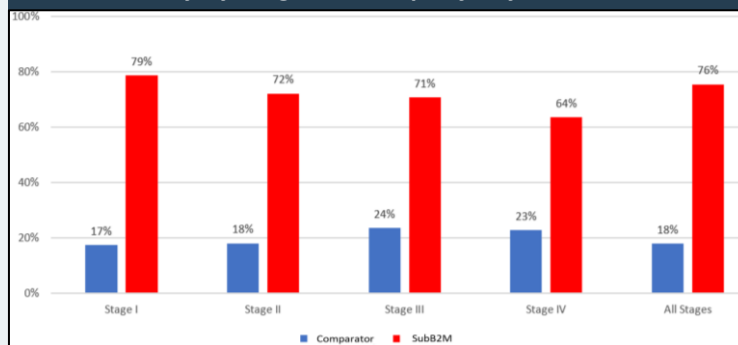
- 2-phase **monitoring study** in over 200-samples to evaluate performance of SubB2M/CA15-3 test as an aid for monitoring treatment response and/or disease recurrence compared to approved CA15-3 test
- Data expected Dec-23



SubB2M/CA15-3 and comparator CA15-3 test performance summary

Breast Cancer All Stages	SubB2M	Comparator
AUC	0.93	0.70
sensitivity	81%	37%
specificity	93%	88%
false negative rate	19%	63%
false positive rate	7%	12%
positive predictive value	92%	75%
negative predictive value	83%	58%
overall accuracy	87%	63%

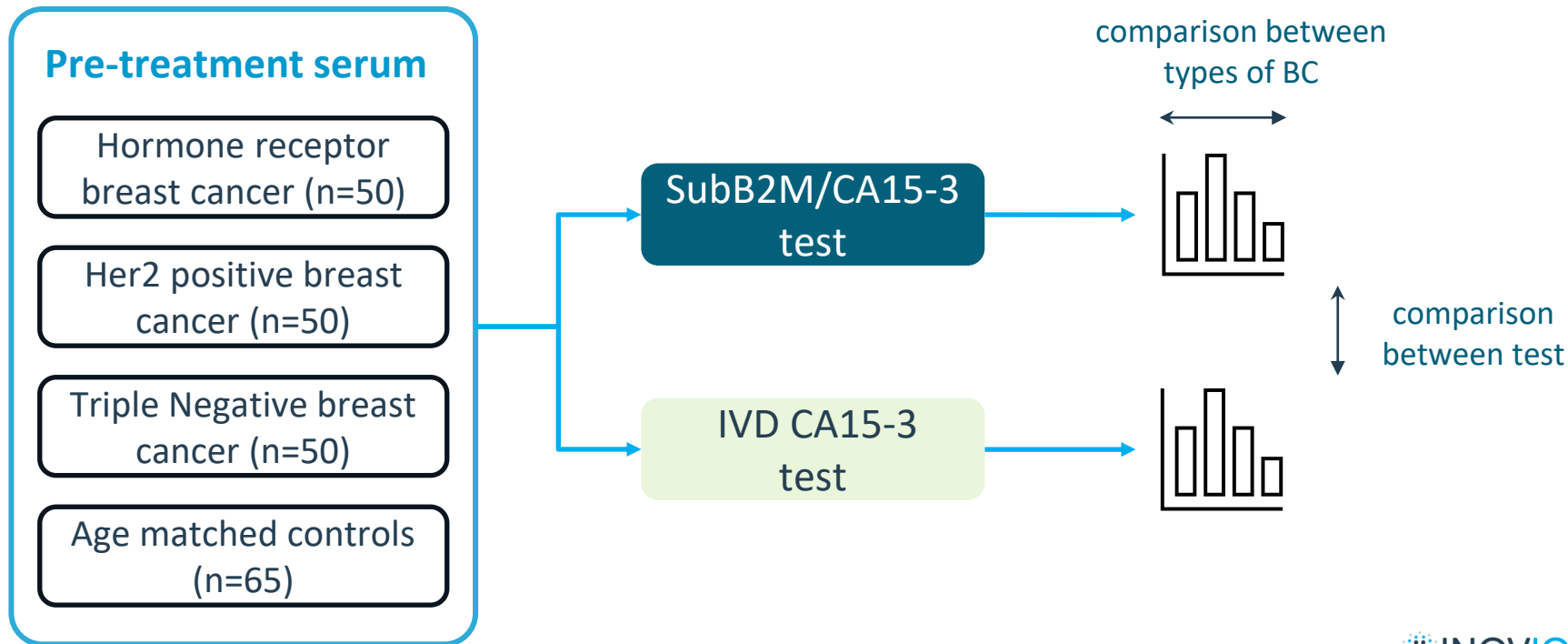
Test Sensitivity by stage @95% Specificity



Breast cancer (n=241: I=75, II=72, 3=72, III=72, IV = 22) and healthy controls (n=242)

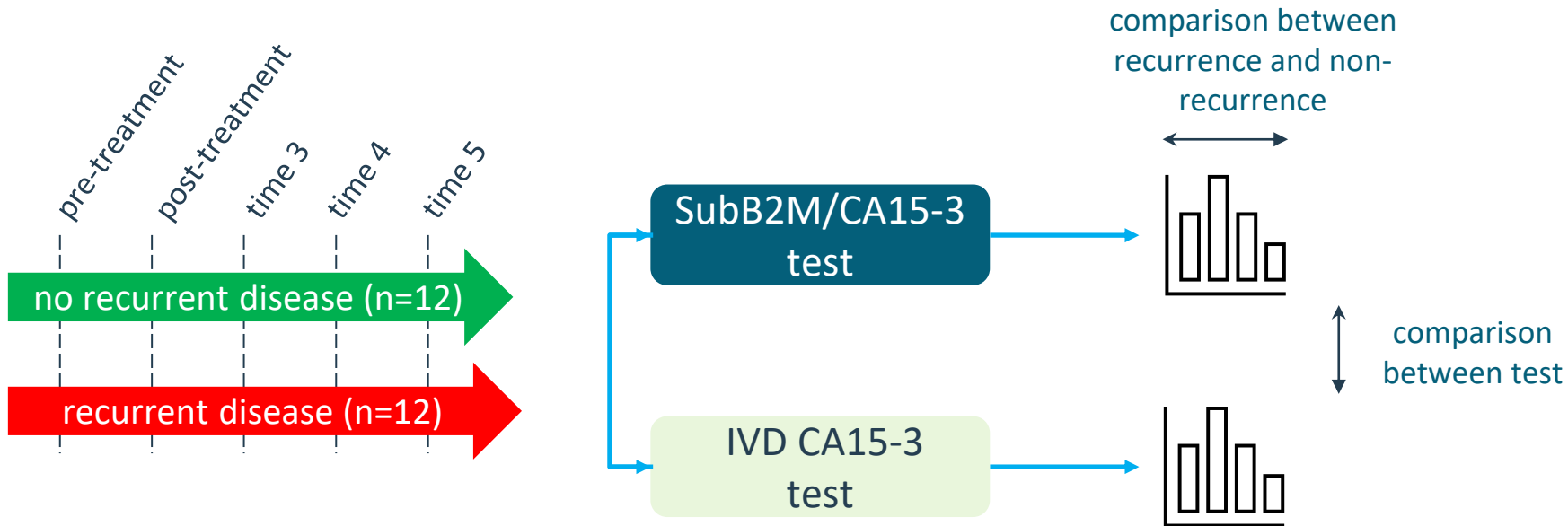


Study 1: To determine whether SubB2M/CA15-3 is equally expressing in women with different subtypes of breast cancer





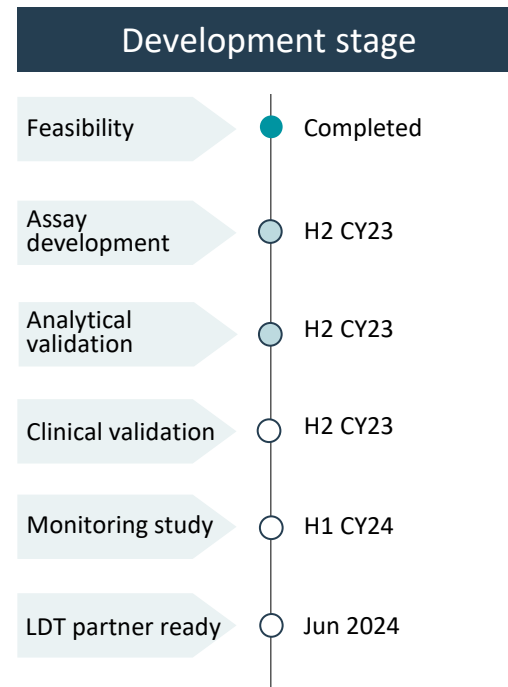
Study 2: To determine the accuracy of SubB2M/CA15-3 to identify breast cancer recurrence





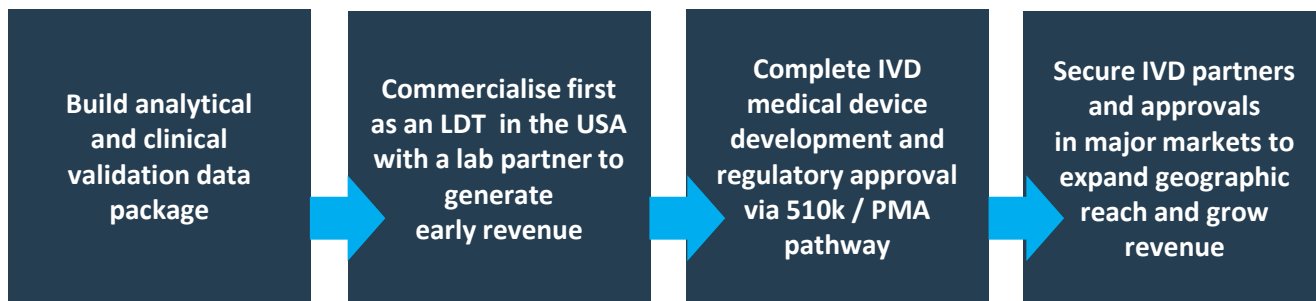
Progressing towards clinical validation

Ovarian cancer	<ul style="list-style-type: none">• #8 cancer in women & deadliest gynaecological cancer• 314k new cases of ovarian cancer worldwide pa¹• 823k survivors (5-year)¹
Unmet medical need	<ul style="list-style-type: none">• Earlier and more accurate detection and monitoring tests required for ovarian cancer• US\$1.8b global diagnostics market²
Disruptive technology	<ul style="list-style-type: none">• SubB2M is an engineered protein that specifically binds the pan-cancer biomarker Neu5Gc• Improved immunoassay for detection of Neu5Gc decorated CA125• Increased sensitivity and specificity to detect cancer over existing assays
Intended use	<ul style="list-style-type: none">• Aid in monitoring ovarian cancer treatment response and disease recurrence in women previously diagnosed with disease
Go-to-market strategy	<ul style="list-style-type: none">• LDT then IVD (510k/PMA process)• Partner with a CLIA-accredited laboratory

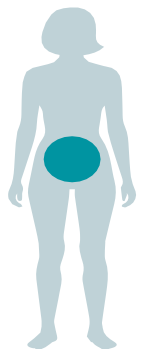




SubB2M/CA15-3 test is expected to be partner-ready in December 2023 for commercialisation as a Laboratory Developed Test

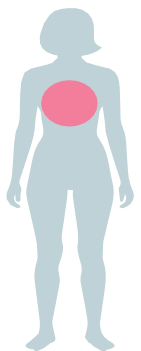
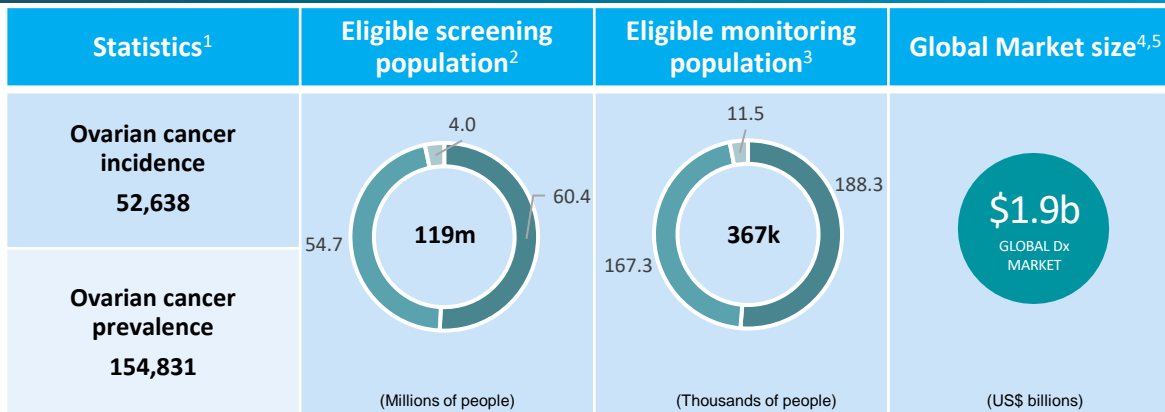


Market potential | Screening and monitoring tests



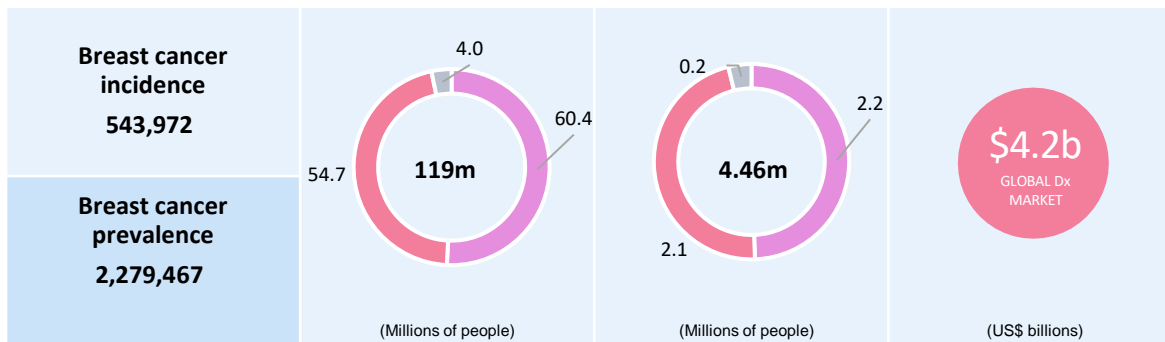
Ovarian cancer

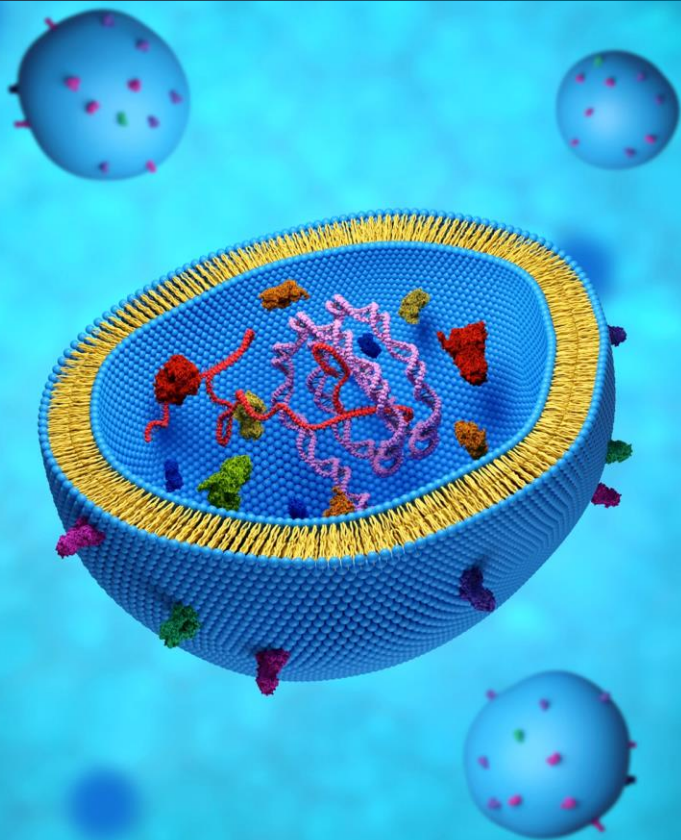
- EU5
- US
- AU



Breast cancer

- EU5
- US
- AU





- Exosomes are released by cells and perform key roles in **intercellular communication, immune regulation and pathogenesis**
- Diseases elicit changes in the release of exosomes and their **molecular cargo** (DNA, RNA and proteins)
- Exosomes can be isolated from biofluids (including blood, urine and saliva) and their messages “read” to diagnose the **health or disease status** of the parent cell
- Exosome **diagnostics and therapeutics** are being developed for oncology, neurology, cardiology, immunology, inflammatory and other diseases
- Commercial potential limited by **time-consuming and inefficient exosome isolation** methods that are not suitable for commercial applications
- INOVIQ has developed **fast, efficient and scalable exosome isolation technology**

US\$661m
Exosome
research market¹

US\$8.7b
Exosome
diagnostic & therapeutic
market²



Immunoaffinity magnetic bead-based capture system for isolation and analysis of exosomes

Rapid, Simple,
Cost-effective

Scalable
Full automation



cGMP

Compatible downstream
analysis
Enriches relevant EVs
Reproducible

Compatible with path
lab workflow and
platforms





EXO-NET PAN-EXOSOME CAPTURE

EXO-NET is a research tool for fast, efficient & scalable exosome isolation from plasma, serum, urine, saliva and cell-conditioned media^{1,2,3}



CUSTOMISED EXO-NET TOOLS

Design custom EXO-NET tools using ligands for specific EV populations



EXOSOME ISOLATION

EV isolation using EXO-NET powered, fully-automated, high-throughput platform¹



BIOMARKER DISCOVERY

Biomarker discovery to identify, evaluate and validate EV-based RNA and Protein biomarkers



DIAGNOSTICS DEVELOPMENT

EV-based clinical diagnostics, clinical trial assays and companion diagnostics



SubB2M and EXO-NET programs moving towards key inflection points

H2 CY 2023

- ✓ EXO-NET co-marketing agreement with Promega
- ✓ Results of EXO-OC equivalence study in plasma and serum (n=250)
- Results SubB2M SPR feasibility study
- Results SubB2M/CA125 OC analytical validation study
- Results of SubB2M/CA15-3 BC monitoring study
- Progress SubB2M partnering
- ✓ TEXO-NET data @ ANZSEV23 meeting

H1 CY 2024

- Commercial progress SubB2M/CA15-3 LDT
- Results SubB2M/CA125 OC clinical validation studies
- NEURO-NET data
- New EXO-NET collaborations / partnering
- Progress EXO-OC test collaboration and clinical data



1

Innovative Company

Focused on next-gen diagnostic and exosome solutions to improve health outcomes in cancer and other diseases

2

Patented Technology

Proprietary SubB2M & NETs technologies with multiple diagnostic and therapeutic applications

3

Strong Pipeline

Deep pipeline for detection of common and/or deadly cancers

4

Compelling Results

Data for SubB2M and exosome-based tests demonstrating earlier and more accurate detection for breast & ovarian cancers

5

Commercialized Products

Products in-market for exosome isolation and bladder cancer detection

6

Partnering for Growth

Commercialisation through partnering to deliver solutions to global markets

7

Experienced Leadership

Track record in healthcare leadership, exosome science, diagnostic development and commercialisation

8

Funding our Future

Cash of \$6.3m as at 30 Sep 23 to fund operations and pipeline development



INOVIQ Ltd

23 Normanby Road
Notting Hill VIC 3168
Australia

P +61 3 9548 7586

E info@inoviq.com

W www.inoviq.com

Dr Learne Hinch | CEO

E lhinch@inoviq.com

M +61 400414416

